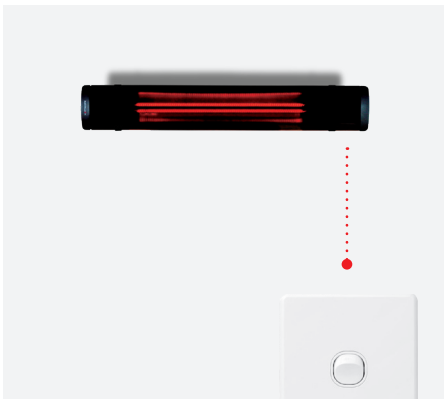


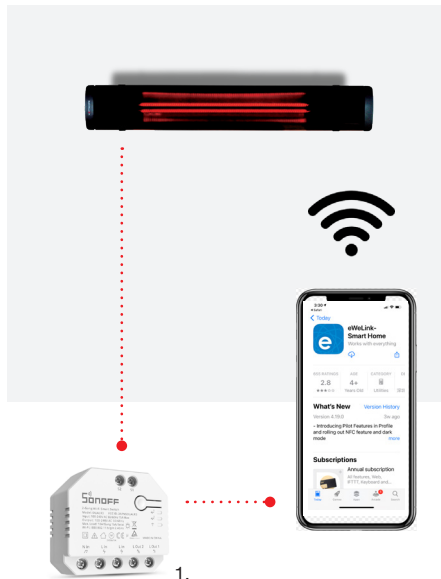
Quick Guide

3 easy ways to operate your HEATSCOPE® Heater



1. Operated with a Wall-switch

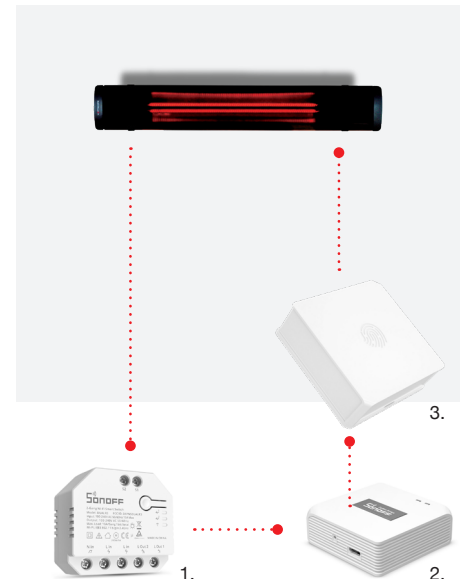
Wall-switch not included.



2. Operated by WiFi

Optional accessories required:

1. Dual WiFi Smart Switch*

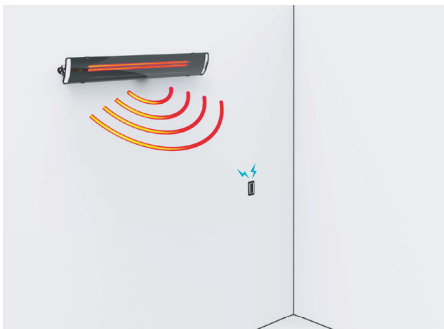


3. Operated by Remote Control

Optional accessories required:

1. Dual WiFi Smart Switch*
2. Zigbee Bridge
3. Zigbee Wireless Switch (Remote)

*Internet connection is required. Dual WiFi Smart Switch is only compatible with 2.4GHz band. Download the eWeLink app to your cell phone or tablet and sign up for an account.



Reminders

- Heaters must be hard-wired to the electrical circuit by a licensed electrician.
- All models are supplied with brackets for both wall-mount or ceiling-mount installations.
- The heater must not be installed directly below a power source/socket.
- Salt or chlorine will corrode over time, do not install near swimming pools, spas or near the ocean.
- Please check the manual for minimum clearances from ceiling, wall and floor.
- Zigbee bridge is only required when adding optional accessories such as remote control or motion sensor.